

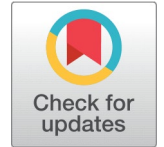


# THE ORIGIN OF A NEW RELATIVITY. NO SENSE OF EINSTEIN'S PRINCIPLES OF RELATIVITY



José Luís Pereira Rebelo Fernandes<sup>1</sup>  

<sup>1</sup>Independent researcher since 2005, Engineer, Graduated from the University of Porto, Portugal



## ABSTRACT

Based on the analysis of “The contraction of time under the action of a gravitational field, in different references at rest”, we conclude that space does not contract. In view of the result obtained, we were obliged to analyze the founding principles of Einstein’s theory of relativity, the dilation of time and the contraction of space, the two principles, structural pillars of the whole theory of relativity.

We found problems in the model regarding the relativity of time in the direction of displacement. It is proposed for the calculation of time in the stopped frame the contraction of time in the moving frame which is contrary to the model. We also analyzed Michelson-Morley’s experience and concluded that it does not respect the principle of time expansion for a K in the direction of displacement. Finally, we decided to look with double attention to the meaning of the expression of time dilation, concluding once again that space does not heal and that the principle to be retained is the constancy of space covered by “light” in the equivalent times of all reference frames. We conclude that we have a new way of looking at physics, which will give rise to a new theory of relativity.

Received 6 April 2021  
Accepted 18 April 2021  
Published 30 April 2021

**Corresponding Author**  
José Luís Pereira Rebelo  
Fernandes, [rebelofernandes@sapo.pt](mailto:rebelofernandes@sapo.pt)

DOI [10.29121/  
granthaalayah.v9.i4.2021.3890](https://doi.org/10.29121/granthaalayah.v9.i4.2021.3890)

**Funding:** This research received no specific grant from any funding agency in the public, commercial, or not-for-profit sectors.

**Copyright:** © 2021 The Author(s). This is an open access article distributed under the terms of the Creative Commons Attribution License, which permits unrestricted use, distribution, and reproduction in any medium, provided the original author and source are credited.

**Keywords:** Relativity, Space, Time, Universe, Potential, Gravitational, Velocity, Energy, Mass

## 1. INTRODUCTION

The time under the action of a gravitational field, in different reference frames at rest.

In this analysis, we will use the same principles and methods used for the deduction of current theory.

Let us analyze the principles of the theory of relativity between time in a referential belonging to a gravitational field generated by mass M and another reference for that gravitational field.



### 1.1 THE MODEL

Through analysis of Einstein's relativity, derived from the Schwarzschild metric, it is proposed the change of time between a reference frame A within the gravitational field of mass M, and another C on limit of this gravitational field, given by:

$$t_A = \sqrt{1 - \frac{2GM}{Rc^2}} t_C \tag{1.1}$$

The same of:

$$t_A = \sqrt{\frac{c^2 - \frac{2GM}{R}}{c^2}} t_C \tag{2.1}$$

Considering a reference frame, A on a surface of a spherical mass M, with the radius R and a reference frame C limit of the action of the gravitational field of the mass M.

Where:

G- Gravitational "constant".

R - Distance between the reference frame A and the center of the mass M, its radius.

M - Mass.

$c^2$  - Potential energy of light in reference frame A.

$t_A$  - Time in reference frame A.

$t_C$  - Time in reference frame C.

$$U_A = c^2 \tag{3.1}$$

When the signal reaches C, by the action of the gravitational field generated by mass M we have an energy of the "light" in C, given by:

$$U_C = c^2 - \frac{2GM}{R} \tag{4.1}$$

From Eq. (3.1) considering Eq. (2.1) and Eq. (4.3), we have:

$$t_A = \sqrt{\frac{U_C}{U_A}} t_C \tag{5.1}$$

$$\frac{t_C}{t_A} = \sqrt{\frac{U_A}{U_C}} \tag{6.1}$$

From Eq. (6.1), the time in two different stationary frames is inversely proportional to the square root of the “light” energy in those frames.

As we have “light” energies, different in A and C, so we can consider their potential as the square of the speed of “light”, so we will have:

$$U_A = C_A^2 \tag{7.1}$$

$$U_C = C_C^2 \tag{8.1}$$

$$\frac{t_C}{t_A} = \sqrt{\frac{C_A^2}{C_C^2}} \tag{9.1}$$

$$\frac{t_C}{t_A} = \frac{C_A}{C_C} \tag{10.1}$$

$$C_C t_C = C_A t_A \tag{11.1}$$

We are then talking about the space traveled by the “light” in the reference frame  $C, L_C$  and in reference frame  $A, L_A$ .

$$L_C = L_A \tag{12.1}$$

Once again, it turns out that space does not contract.

From Eq. (10.1):

$$C_C = C_A \frac{t_A}{t_C} \tag{13.1}$$

The speed of “light” will then be inversely proportional to the equivalent times of each referential frame.

From Eq. (12.1), we conclude that what is constant is the space traversed by “light” in the equivalent times of all reference frames.

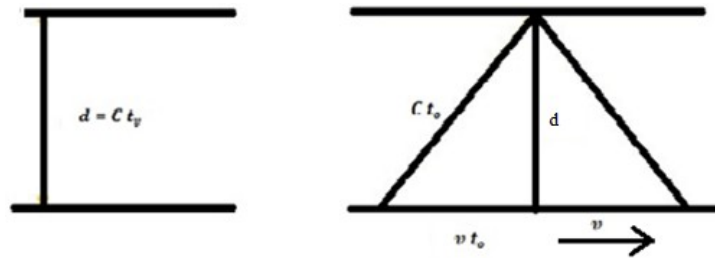
## 1.2 CONCLUSION

After so many years of taking into account the fundamental principles proposed by Einstein, we will have to revisit his proposal in order to try to understand the conclusion we have reached.

## 2. TIME DILATION AND SPACE CONTRACTION

### 2.1 TIME DILATION

Let us briefly remember Einstein’s proposed “Mirror Method”.



**Figure 1** Mirrors - Vertical emission

- We are within the moving reference frame.

The conscience we have is that we are stopped

$$t_v = \frac{d}{c} \tag{1.2}$$

$$d = t_v C \tag{2.2}$$

- We are now in a stopped reference looking at the movingreference.

Considering the old Pythagoras theorem, we will have:

$$C^2 t_o^2 = v^2 t_o^2 + d^2 \tag{3.2}$$

Replacing d

$$C^2 t_o^2 = v^2 t_o^2 + C^2 t_v^2 \tag{4.2}$$

$$C^2 t_v^2 = C^2 t_o^2 - v^2 t_o^2 \tag{5.2}$$

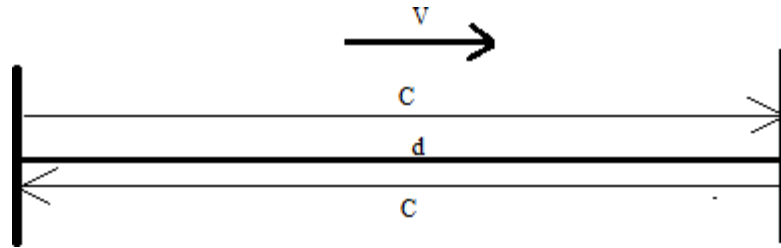
$$t_v^2 = (t_o^2) \frac{C^2 - v^2}{C^2} \tag{6.2}$$

$$\frac{t_v^2}{t_o^2} = \frac{C^2 - v^2}{C^2} \tag{7.2}$$

$$\frac{t_v}{t_o} = \sqrt{\frac{C^2 - v^2}{C^2}} \tag{8.2}$$

The expression that gives us the dilation of time is found in a moving reference v relative to time in the stopped reference frame.

## 2.2 SPACE/OBJECT CONTRACTION



**Figure 2** Mirrors - horizontal displacement

A ; v

We are within the moving reference frame. The conscience we have is that we are stopped.

$$t_v = \frac{2d}{c} \quad (9.2)$$

$$2d = t_v C \quad (10.2)$$

B ; v=0

We are now in the stopped reference frame, looking at the moving reference frame.

$$t_{o1} = \frac{d}{c+v} \quad (11.2)$$

$$t_{o2} = \frac{d}{c-v} \quad (12.2)$$

$$t_o = t_{o1} + t_{o2} \quad (13.2)$$

$$t_o = \frac{d}{c+v} + \frac{d}{c-v} \quad (14.2)$$

$$t_o = \frac{2dC}{c^2 - v^2} \quad (15.2)$$

The relativity of time will come from:

$$\frac{t_v}{t_o} = \frac{\frac{2d}{c}}{\frac{2dC}{c^2 - v^2}} \quad (16.2)$$

$$\frac{t_v}{t_o} = \frac{c^2 - v^2}{c^2} \quad (17.2)$$

This value is different from the value found in Eq. (8.2).

If we consider that in this stopped reference frame we observe in motion the lengths change, we will have, from Eq. (15.2), we have:

$$t_o = \frac{2dKC}{c^2 - v^2} \quad (18.2)$$

From Eq. (10.2), we will have

$$t_o = \frac{(t_v C) KC}{c^2 - v^2} \quad (19.2)$$

$$k = \frac{c^2 - v^2}{c^2} \frac{t_o}{t_v} \quad (20.2)$$

$$k = \frac{c^2 - v^2}{c^2} \sqrt{\frac{c^2}{c^2 - v^2}} \quad (21.2)$$

$$k = \sqrt{\frac{c^2 - v^2}{c^2}} \quad (22.2)$$

When we are in B and observe the moving object, we conclude that the length of the object is reduced by the coefficient K in relation to the measured length when we are in the frame in motion in the direction of displacement.

As far as I know, this phenomenon has never been observed. There is no news that when we look at a moving object, from a stopped reference frame, it shrinks.

On the other hand, if the moving object shrinks for those who look at it from a stopped frame, this indicates that it shrinks in relation to the length measured at the moment of the moving frame. Since k is introduced as a factor in the second term of the equation, it indicates that the length in the moving frame is constant, since no factor is intruded into the first member of the equation.

Not introducing the K factor in the first member is to assume that the length in the moving reference frame is always constant.

This conclusion drawn from the model proposed by Einstein is contrary to what he proposes.

Einstein proposes precisely the opposite, that in the moving frame, space contracts in the direction of the displacement of the moving frame.

We cannot obtain the time  $t_o$  of the stopped reference frame and  $K(v)$  coefficient of the length contraction in direction of the displacement of the moving reference frame.

We are not in a moving reference frame, we are observing from a stopped reference frame

### 2.3 MAKING SENSE?

For the value of K to appear where it was placed, it is because we consider K in the calculation of  $t_o$ .

From Eq. (18.2):

$$t_o = \frac{2dC}{c^2 - v^2} \quad (23.2)$$

$$t_o = \frac{2dKC}{c^2 - v^2} \quad (24.2)$$

We are not in any doubt that we are calculating a time in the stopped reference frame  $t_o$  from a coefficient K in the direction of displacement, in motion.

If we are thinking about changing lengths in a moving frame, then we should consider that K in the moving frame.

$$2dK = t_v C \quad (25.2)$$

$$2d = \frac{t_v C}{k} \quad (26.2)$$

$$t_o = \frac{2dC}{c^2 - v^2} \quad (27.2)$$

$$t_o = \frac{\frac{t_v C}{k} C}{c^2 - v^2} \quad (28.2)$$

$$\frac{t_v}{t_o} = k \frac{c^2 - v^2}{c^2} \quad (29.2)$$

$$k \frac{c^2 - v^2}{c^2} = \sqrt{\frac{c^2 - v^2}{c^2}} \quad (30.2)$$

$$k = \sqrt{\frac{c^2}{c^2 - v^2}} \quad (31.2)$$

After all, what would make sense was the expansion of the objects / space in the reference frames in motion in the direction of this displacement.

### 2.4 SUMMARY

The basic principle of Einstein's theory of relativity tells us that in the direction of displacement there is a contraction of length.

An impossibility was proposed to us, simultaneously the time  $t_o$  for the stopped frame and the  $K(v)$  coefficient of contraction of the lengths in the direction of displacement for the moving frame. The frame cannot be stopped and moving at the same time.

This observation doesn't make any sense.

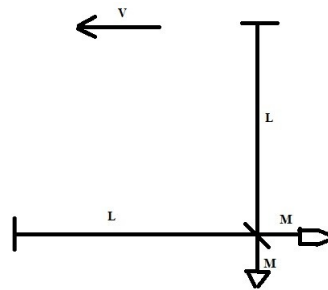
The careful analysis we did contradicts Einstein's own principle of relativity.

If we want to take seriously the models proposed by Einstein, we could only conclude that the objects expand in the direction of displacement of the moving reference frame.

### 3. THE CONTRACTION OF SPACE AND THE MICHELSON-MORLEY EXPERIENCE

Below we have simplified equipment in order to facilitate the calculation we intend to perform.

Let's consider the arms on the cross, with lengths all the same.



**Figure 3** Michelson-Morley -Ortogonal

So we will have:

In the direction of travel.

$$t_1 = \frac{kM}{c-v} \tag{1.3}$$

$$t_2 = \frac{kL}{c-v} \tag{2.3}$$

$$t_3 = \frac{kL}{c+v} \tag{3.3}$$

$$t_4 = \frac{M}{\sqrt{c^2-v^2}} \tag{4.3}$$

$$t_h = \frac{kM}{c-v} + \frac{kL}{c-v} + \frac{kL}{c+v} + \frac{M}{\sqrt{c^2-v^2}} \tag{5.3}$$

$$t_h = \frac{2L+2M+M\frac{v}{c}}{\sqrt{c^2-v^2}} \tag{6.3}$$

In the direction perpendicular to the displacement.



Here the same type of error is made as in the model proposed by Einstein, or vice versa, the value of K referring to the contraction of the object in the direction of displacement was introduced for the calculation of the time of the reference frame stopped.

$$t_1 = \frac{kM}{C-V} \tag{7.3}$$

$$t_2 = \frac{L}{\sqrt{C^2-v^2}} \tag{8.3}$$

$$t_3 = \frac{L}{\sqrt{C^2-v^2}} \tag{9.3}$$

$$t_4 = \frac{M}{\sqrt{C^2-v^2}} \tag{10.3}$$

$$t_{vt} = t_h = \frac{kM}{C-V} + \frac{2L}{\sqrt{C^2-v^2}} + \frac{M}{\sqrt{C^2-v^2}} \tag{11.3}$$

$$t_{vt} = \frac{2L+2M+M\frac{V}{C}}{\sqrt{C^2-v^2}} \tag{12.3}$$

$$t_{vt} = t_h = t_0 \tag{13.3}$$

Really, the time it would take the light to travel the orthogonal paths would be the same.

But these times, although equal, present a problem that is the dependence on V. This dependence would originate the change in the spectrum of interference in the arrival sensor, which was never suggested.

For V=0

$$t_v = \frac{2(L+M)}{C} \tag{14.3}$$

The relativity of the times will come from;

$$\frac{t_v}{t_0} = \frac{\frac{2(L+M)}{C}}{\frac{2L+2M+M\frac{V}{C}}{\sqrt{C^2-v^2}}} \tag{15.3}$$

$$\frac{t_v}{t_0} = \frac{2L+2M}{2L+2M+M\frac{V}{C}} \sqrt{\frac{C^2-v^2}{C^2}} \tag{16.3}$$

$$\frac{t_v}{t_0} = \frac{L+M}{L+M+M\frac{V}{2C}} \sqrt{\frac{C^2-v^2}{C^2}} < \sqrt{\frac{C^2-v^2}{C^2}} \tag{17.3}$$

If  $M=L$  we have:

$$\frac{t_v}{t_0} = \frac{1}{1 + \frac{V}{4C}} \sqrt{\frac{C^2 - v^2}{C^2}} < \sqrt{\frac{C^2 - v^2}{C^2}} \quad (18.3)$$

Michelson Morley's experience does not verify the expression of time dilation in a moving body,  $v > 0$ . The higher  $V$  is lower the value obtained for the relativity of time  $\frac{t_v}{t_0}$ .

If we consider the contraction of space, we question the expression of time dilation, which has long been tested in particle accelerators.

We get the time,  $t_0$ , in the stopped reference and the  $K$ , coefficient of object/space contraction,  $L_v$ , of a moving reference.

We cannot simultaneously obtain a stopped and moving reference frame.

#### 4. WHAT IS THE MEANING OF THE EXPRESSION OF TIME DILATION?

The expression is known and already verified in reality in experiments on particle accelerators.

Since our reference frame 0 is at rest and  $V$  is the reference frame in motion relative to 0, will we have:

$$\frac{t_v}{t_0} = \sqrt{\frac{C^2 - V^2}{C^2}}$$

Being:

$t_0$  - The time in our reference frame 0.

$C$  - The speed of light in our frame, which here we now characterize as  $C_0$ .

$V$  - Velocity measured in our referential, which we characterize by  $V_0$ .

$t_v$  - The time in the reference frame in motion.

$$\frac{t_v}{t_0} = \sqrt{\frac{C_0^2 - V_0^2}{C_0^2}} \quad (1.4)$$

In fact what we know is the speed of light and the speed displacement of the moving reference frame measured in our frame. In the expression the terms, time and speed of light are in our reference frame.

We are looking at the space traveled by the light in our reference frame,  $L_0$ , obtained by:

$$L_0 = t_0 C_0 \quad (2.4)$$

From Eq. (1.4), we have:

$$t_0 = t_V \sqrt{\frac{C_0^2}{C_0^2 - V_0^2}} \tag{3.4}$$

$$t_0 C_0 = t_V C_0 \sqrt{\frac{C_0^2}{C_0^2 - V_0^2}} \tag{4.4}$$

In the first term we have a space traveled given by the product of time by the speed of light.

The factor in the second member cannot affect the time in the mobile frame, which would not make sense as this is the unit of your time.

Therefore the dimensionless factor can only be related with the speed of light in the moving reference frame.

In the second member we have the product of time by the velocity which is expressed by.  $(C_0 \sqrt{\frac{C_0^2}{C_0^2 - V_0^2}})$

AS  $\frac{C_0^2}{C_0^2 - V_0^2} > 1$  for  $v > 0$ , then the velocity  $C_0 \sqrt{\frac{C_0^2}{C_0^2 - V_0^2}} > C_0$ , the speed measured in the moving frame is greater than the speed of light measured in our frame. This speed can only be the speed of light measured in the moving frame.

If in the first member we have the space traveled by the light in our reference frame  $L_0$ , then in the second member we can only have the space traveled by the light in the moving reference frame  $L_V$ .

$$t_0 C_0 = t_V C_V \tag{5.4}$$

$$L_0 = L_V \tag{6.4}$$

It indicates that the space does not contract and the speed of light in the moving reference frame  $C_V$ , is given by:

$$C_V = C_0 \sqrt{\frac{C_0^2}{C_0^2 - V_0^2}} \tag{7.4}$$

$$C_V = C_0 \frac{t_0}{t_V} \tag{8.4}$$

$$C_V t_V = C_0 t_0 \tag{9.4}$$

The same of Eq. (5.4)  
Space can not contract.

## 5. CONCLUSION

From what, has been analyzed, the principle that the speed of light is constant in all references does not seem right.

The principle to keep in mind is:

The space traveled by light, in the equivalent times of all reference frames, is always constant.

On the other side, it concluded that the measurement of the speed of light, as well as any velocity, is inversely proportional to the respective equivalent times of the reference frames.

$$C_V = C_0 \frac{t_0}{t_V}$$

$$V_V = V_0 \frac{t_0}{t_V}$$

There is no contraction of space in the direction of displacement.

We have a different relativity than we've had so far.

$$L_v = L_0$$

## 6. INTRODUCTION TO RELATIVITY

Let's look at energy in the view of quantum mechanics.

$E$  - Energy

$h$  - Planck's constant

$\sqrt{0}$  - Frequency

$T$  - Period

$$E_0 = h \sqrt{0} \tag{1.6}$$

$$E_0 = \frac{h}{T_0} \tag{2.6}$$

$$E_0 t_0 = h \tag{3.6}$$

Meeting Planck's constant.

$$E_0 t_0 = K \tag{4.6}$$

$$E_v t_v = E_0 t_0 \tag{5.6}$$

Which confirms the relativity of energy from the theory of traditional relativity.

$$m_v C_v^2 t_v = m_0 C_0^2 t_0 \tag{6.6}$$

From Eq.(9.4),  $C_v t_v = C_0 t_0$ , because the space traversed by light is always the same at all equivalent times of all reference frames.

$$m_v C_v = m_0 C_0 \quad (7.6)$$

Which indicates that the linear momentum is always the same in all reference frames

$$m_v = m_0 \frac{C_0}{C_v} \quad (8.6)$$

$$m_v = m_0 \frac{t_v}{t_0} \quad (9.6)$$

When the velocity tends to C then the mass tends to 0, i.e. it turns into energy, which makes perfect sense.

## REFERENCES

- ALLAN, D. W., WEISS, M. A., & ASHBY, N. (1985). Around-the-World Relativistic Sagnac Experiment. *Science*, 228(4695), 69–70. Retrieved from <https://dx.doi.org/10.1126/science.228.4695.69>
- Ashby, N. (2003). Relativity in the Global Positioning System. *Living Reviews in Relativity*, 6(1). Retrieved from <https://dx.doi.org/10.12942/lrr-2003-1>
- Boehle, A., Ghez, A. M., Schödel, R., Meyer, L., Yelda, S., Albers, S., Martinez, G. D., Becklin, E. E., Do, T., Lu, J. R., Matthews, K., Morris, M. R., Sitarski, B., & Witzel, G. (2016). AN IMPROVED DISTANCE AND MASS ESTIMATE FOR SGR A\* FROM A MULTISTAR ORBIT ANALYSIS. *The Astrophysical Journal*, 830(1), 17–17. Retrieved from <https://dx.doi.org/10.3847/0004-637x/830/1/17>
- Crawford, P. (2013). A Teoria Da Relatividade E O 'Global Positioning System. *Universidade De Lisboa. Consultado Em 18 De Fevereiro De 2016. Cópia Arquivada (Pdf) Em 5 De Novembro De*.
- de Magalhães, M. G. M., Schiel, D., Guerrini, I. M., & Jr., E. M. (2002). Utilizando Tecnologia Computacional na Análise Quantitativa de Movimentos: Uma Atividade para Alunos do Ensino Médio. *Revista Brasileira de Ensino de Física*, 24(2), 97–102. Retrieved from <https://dx.doi.org/10.1590/s1806-11172002000200004>
- Deus, J. D., Pimenta, M., Noronha, A., Peña, Brogueira, Introdução, A., & Física. (2000). *Introduction To Physics*, 633–633.
- Eisberg, R., & Resnick. (1979). Quantum Physics Of Atoms. *Molecules, Solids, Nuclei, And Particles*, 928–928.
- Fernandes, J. L. P. R. (2020a). The Galaxies and the Dark Matter. *International Journal of Physics*, 9(1), 36–41. Retrieved from <https://dx.doi.org/10.12691/ijp-9-1-4>
- Fernandes, J. L. P. R. (2020b). The Real Removal Of The Moon From The Earth. The Age Of The Universe. *International Journal Of Physics*, 8(3), 114–119.
- Fernandes, J. L. P. R. (2020c). The Relativity Of The Time With The Universal Density Of Potential Energy At Different Stationary Reference Frames. *International Journal Of Physics*, 8(1), 11–13.

- 
- Fernandes, J. L. P. R. (2020d). The Universal Gravitational Variable. *International Journal of Physics*, 8(1), 35–38. Retrieved from <https://dx.doi.org/10.12691/ijp-8-1-6> 10.12691/ijp-8-1-6
- Fernandes, J. L. P. R. (2020e). The Variation Of The Atomic Radius With The Universal Density Of Potential Energy. *International Journal Of Physics*, 8(4), 127–133.
- Fernandes, J. L. P. R. (2021). From The Contraction Of Celestial Bodies To Their Shortest Rotation Period Until The Heating Of The Stars And The Universe Global Theory. *International Journal Of Physics*, 9(2), 96–113.
- Francis, S. . B., Ramsey, . S., Stein, Leitner, J., Moreau, J. M., Burns, R., Nelson, R. A., Bartholomew, T. R., & Gifford, A. (2002). Timekeeping And Time Dissemination In A Distributed Space-Based Clock Ensemble. *Proceedings 34th Annual Precise Time And Time Interval (Ptti) Systems And Applications Meeting*, 17, 201–214.
- Ives, H. E., & Stilwell, G. R. (1938). An Experimental Study of the Rate of a Moving Atomic Clock. *Journal of the Optical Society of America*, 28(7), 215–215. Retrieved from <https://dx.doi.org/10.1364/josa.28.000215> 10.1364/josa.28.000215
- Kennedy, R. J., & Thorndike, E. M. (1932). Experimental Establishment of the Relativity of Time. *Physical Review*, 42(3), 400–418. Retrieved from <https://dx.doi.org/10.1103/physrev.42.400> 10.1103/physrev.42.400
- Natário, J. (2011). General Relativity Without Calculus. *General Relativity Without Calculus*.
- Ricardo, E. C., M, J. F. F. C. E., & Rezende. (2007). *Revista Brasileira De Ensino De Física*, 29, 137–137.
- Selleri, F., & Relativity, L. O. (2005). Lessons Of Relativity, From Eisntein To The Ether Of Lorentz,. *From Eisntein To The Ether Of Lorentz, Edições Duarte Reis E Franco Selleri*, 227–227.
- Taylor, J. H. (1994). Binary Pulsars And Relativistic Gravity". *Rev. Mod. Phys*, 66, 711–719.
- Werlang, R. B., De, R., F, S. L. S. E., & Silveira, D. (2008). *Revista Brasileira De Ensino De Física*, 30, 1503–1503.