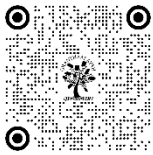


# BRUSHSTROKES AND BITES EXPLORING THE ARTISTIC FUSION OF FOOD AND COLORS IN INDORE, INSPIRED BY ARTIST WAYNE THIEBAUD

Pooja Jain <sup>1</sup> , Anu Ukande <sup>2</sup> 

<sup>1</sup> PhD Scholar (Fine Arts), Shri Vaishnav Institute of Fine Arts Shri Vaishnav Vidyapeeth Vishwavidyalaya Ujjain Road, Indore 453111, M.P., India & Founder International Fine Art Academy, 165 RNT Marg, Indore 452001, India

<sup>2</sup> Associate Professor, Shri Vaishnav Institute of Fine Arts, Shri Vaishnav Vidyapeeth Vishwavidyalaya, Ujjain Road, Indore 453111, M.P., India



Received 19 April 2024

Accepted 29 June 2024

Published 11 July 2024

Corresponding Author

Pooja Jain, [pooja@ifaaonline.com](mailto:pooja@ifaaonline.com)

DOI

[10.29121/shodhkosh.v5.i2.2024.1126](https://doi.org/10.29121/shodhkosh.v5.i2.2024.1126)

**Funding:** This research received no specific grant from any funding agency in the public, commercial, or not-for-profit sectors.

**Copyright:** © 2024 The Author(s). This work is licensed under a [Creative Commons Attribution 4.0 International License](https://creativecommons.org/licenses/by/4.0/).

With the license CC-BY, authors retain the copyright, allowing anyone to download, reuse, re-print, modify, distribute, and/or copy their contribution. The work must be properly attributed to its author.



## ABSTRACT

In a city known for its delectable street food and vibrant culinary culture, the artistry of Wayne Thiebaud, USA, has sparked an intriguing opportunity for artist Pooja Jain in Indore. This study explores the inspiration drawn from Thiebaud's iconic food paintings and the unexplored potential it offers to artists in the region. The research delves into both the conceptual aspects of creating food-themed art and the technical methods and principles that have fueled Thiebaud's success. This investigation comprises a twofold methodology: an in-depth analysis of Thiebaud's artworks focusing on color palette, brushstroke techniques, and compositional elements, and the creation and analysis of the researcher's own paintings of Indore's street food. Additionally, a survey was conducted in Indore to capture local perceptions of the fusion of art and food. By examining Thiebaud's thick paint strokes and bold use of color, creating original artworks, and surveying Indore's residents about their views on food-themed art, this study aims to unearth untapped creative possibilities, fostering a dynamic conversation between the city's culinary prowess and its burgeoning art community.

**Keywords:** Fine Art, Wayne Thiebaud, Indore Street Food, Visual Arts, Culinary Art, Cultural Experience, Art and Food Fusion, Indore Culinary Culture

## 1. INTRODUCTION

Indore, the heart of Madhya Pradesh, boasts a culinary heritage that is second to none. Renowned for its savory street food, from the iconic *samosa*, *kachori*, *patis*, *dahi vada*, *sabudana khichdi*, *kulfi* and *jalebi* at *Sarafa* to the mouthwatering *poha*, *pani-puri*, *chaats* at *Chhappan Dukan*, the city has long been a paradise for food enthusiasts. Yet, amidst this gastronomic splendor, a remarkable artistic

opportunity remains underexplored. This research is a passionate exploration of the uncharted territory that beckons the artists of Indore.

Wayne Thiebaud, celebrated for his vibrant and delectable paintings of cakes, pastries, and food items, has not only redefined food art but also opened doors for artists to communicate through the universal language of cuisine. Inspired by the thick paint and bright colors in Thiebaud's works, this study aims to unveil the missed opportunity for Indore based artists to capture the essence of their city's culinary brilliance on canvas. Beyond the conceptual inspiration, we delve into the technical nuances that have made Thiebaud's art a sensation.

This research is a journey into the convergence of artistic concepts and culinary sensations, seeking to ignite the imagination of artists while bridging the gap between the world of art and the city's food paradise. As we embark on this artistic adventure, we aim to uncover the tantalizing connection between Thiebaud's techniques and the vibrant culinary landscape of Indore.

We hypothesize that Wayne Thiebaud's distinctive artistic style, characterized by bold colors, thick paint strokes, and an emphasis on everyday delights, will inspire and influence artists in Indore, fostering a dynamic conversation between the city's culinary prowess and its burgeoning art community.

## 2. LITERATURE REVIEW

### 2.1. WAYNE THIEBAUD (1920-2021)

The literature review critically examines a range of sources to provide a comprehensive understanding of Wayne Thiebaud's artistic contributions and influence on the art world. The following works have been analyzed to illuminate various aspects of Thiebaud's life and art:

**An Interview with Wayne Thiebaud** [Benson & Shearer \(1969\)](#) offers valuable insights into Thiebaud's perspectives and artistic philosophy, providing a foundational understanding of his early career. Thiebaud is not merely interested in the illusionistic trickery that creates the appearance of a face through paint on a surface. Instead, the artist seems to have a deeper intention—to unite both the physical objects being depicted and the subjective, personal interpretation of those objects by an observer. Thiebaud seeks to convey not only the visual representation of the subject matter but also the emotional and personal connection that the observer invests in what they see. This implies a desire to capture the essence of the subject and evoke a response that goes beyond mere visual recognition, engaging the viewer on a more personal and emotive level.

**Wayne Thiebaud (1920-2021) In Memoriam** [Wilkin \(2022\)](#) serves as a poignant reflection on Thiebaud's life, emphasizing his multifaceted talents, impact on fellow artists, and dedication to his craft. His diverse body of work highlights his powerful depictions of various scenes, including cityscapes, highways, landscapes with rivers, and steep mountains and cliffs. The language used suggests that these images are not meant to be taken literally; instead, they are artistic representations that convey a specific mood or atmosphere.

**Wayne Thiebaud: Draftsman** [Dervaux et al. \(2018\)](#) explores Thiebaud's drawings, compiled with the artist's cooperation, and delves into the wide range of his production on paper, showcasing early sketches, pastels, watercolors, and charcoal drawings.

**On 'Wayne Thiebaud 100' and a Conversation with the Artist at Age 101** [Purcell \(2022\)](#) pays tribute to Thiebaud's legacy, highlighting his formalistic

approach and the challenges and joys of his work. It reveals Thiebaud's ongoing engagement with his artwork, including his practice of revisiting and refining his paintings over extended periods. The example provided, the "Tapestry Skirt" created in 1976, illustrates this habit. Thiebaud's tendency to touch up paintings, even years or decades later, speaks to his dedication to the artistic process and his continuous desire to perfect and enhance his creations. The use of the term "Tapestry Skirt" (1976, 1982, 1983, 2003) indicates multiple instances of revision, emphasizing the evolving nature of Thiebaud's artistic endeavors. This practice reflects a commitment to the ongoing development and refinement of his body of work throughout his career.

**Wayne Thiebaud Mountains: 1965–2019** Vance (2021) focuses on Thiebaud's mountain paintings, offering a vivid portrayal of his brushwork and insights into the visual impact of his work.

**More: Cake, Feedism, and Asexuality** Owen (2022) explores the intersection of art and social themes, potentially providing a unique perspective on Thiebaud's influence on contemporary discussions. It investigates the convergence of asexuality's nonsexual joys with feedism's erotic pleasures linked to eating, exploring the concept of "quantity" as a queer framework. Through analyses of visual elements, including a Wayne Thiebaud painting, it provides nuanced insights into the intersection of nonsexual and sexual experiences.

**Cakes, Cookies, and Gumballs, Oh My!** Pendergrass (2021) offers insights into how Thiebaud's art intersects with educational contexts, particularly in teaching mathematics.

**Tilted Upwards** Sankalia (2023) explores G.K. Chesterton's parable and Thiebaud's cityscape paintings, emphasizing the importance of respecting and reconnecting with the everyday environment.

Baker et al. (2022), provide an overview of Thiebaud's entire body of work, offering a comprehensive perspective on his artistic evolution. By critically analyzing these works, this literature review aims to build a nuanced and comprehensive understanding of Wayne Thiebaud's impact on the art world and his enduring legacy.

## 2.2. FOOD IN PAINTING

The book "Food in Painting: From the Renaissance to the Present" Bendiner (2004) explores the representation of food in art throughout history. In the context of using food items as subjects of art, this book could serve as a valuable resource and reference. Food Art Does Not Reflect Reality Wansink et al. (2016) utilizes quantitative content analysis of food-related paintings to explore the potential historical insights into family meals across Western Europe and the United States. The study suggests that food in paintings can offer valuable insights into cultural and societal aspirations, aesthetic preferences, and symbolic meanings attached to certain foods.

Evaluation of gastronomic objects in Renaissance painting Bendiner (2004) study delves into the influence of the Renaissance period on art, specifically focusing on the emergence of gastronomic objects in paintings. Through document analysis and semiotics, it reveals that early and high Renaissance painters, including notable figures like Giuseppe Arcimboldo, used 61 gastronomic objects symbolically. The findings highlight a preference for aesthetically pleasing vegetables and symbolic interpretations, deviating from the common depiction of everyday foods like chicken and eggs.

## 2.3. INDORE'S VIBRANT FOOD SCENE

The food scene in Indore is renowned for its vibrant and diverse culinary offerings. From the bustling Sarafa Bazaar, where an array of street food stalls serves local delicacies like *poha*, *jalebi*, samosas, and *kachoris*, to the iconic *Chappan Dukaan* with its 56 food outlets offering a variety of snacks and sweets, Indore's food scene is a delightful fusion of flavors. The city is celebrated for its savory chats, spicy kebabs, and delectable sweets, making it a paradise for food enthusiasts. The lively and bustling atmosphere of these food hubs adds to the unique charm of Indore's culinary landscape [Care \(n.d.\)](#), [Garg et al. \(2023\)](#), [Kagliwal \(2023\)](#), [Ubeja et al. \(2021\)](#).

## 2.4. GAPS IN THE LITERATURE

### Indore's Culinary Arts and Local Artists:

- Limited exploration of how Wayne Thiebaud's artistic influence translates to local artists in Indore, especially in the context of the city's vibrant culinary culture.

### Intersection of Wayne Thiebaud's Influence and social media:

- The literature does not explicitly address how Thiebaud's influence might manifest on social media platforms, which play a significant role in contemporary artistic discourse.

### In-Depth Analysis of Thiebaud's Specific Artworks:

- While Thiebaud's influence is acknowledged, a more detailed analysis of specific artworks, especially those depicting food, could provide deeper insights into his techniques and impact.

### Culinary Arts Beyond Taste and Smell:

- The literature touches on considering visual qualities in food but does not extensively explore other artistic dimensions in culinary arts, such as the use of space, presentation, and cultural symbolism.

### A More Inclusive Definition of Art:

- While the literature challenges traditional distinctions, there's an opportunity for a more inclusive definition of art that transcends historical classifications and embraces a broader range of creative expressions.
- Identifying these themes, trends, and gaps provides a foundation for further research and exploration in the dynamic intersection of art, food, and cultural representation.

## 3. METHODOLOGY

### 3.1. RESEARCH DESIGN

The research design for this study is a mixed-method approach, combining qualitative and quantitative methods to provide a comprehensive understanding of the fusion of art and food in Indore, inspired by Wayne Thiebaud's paintings. This design was chosen to leverage the strengths of both approaches and ensure a robust analysis of the research questions.

### **3.1.1. QUALITATIVE APPROACH**

**Art Analysis:** This involves a detailed examination of Wayne Thiebaud's artworks. The analysis focuses on color palettes, brushstroke techniques, composition, and thematic elements to understand the artistic techniques and principles employed by Thiebaud. This qualitative analysis provides insights into the artistic aspects that can be applied to the depiction of Indore's Street food in visual arts.

### **3.1.2. QUANTITATIVE APPROACH**

**Survey:** A structured survey was conducted among residents and artists in Indore to capture their perceptions and attitudes towards food-themed art. The survey includes both closed and open-ended questions to gather quantitative data and qualitative responses.

## **3.2. RATIONALE FOR MIXED-METHOD DESIGN**

The mixed-method design allows for a comprehensive exploration of the research topic by combining the depth of qualitative analysis with the breadth of quantitative data. This approach ensures a holistic understanding of how Wayne Thiebaud's artistic techniques can inspire local artists in Indore and how the fusion of art and food is perceived by the community.

## **3.3. OBJECTIVES**

The primary objectives of this research are as follows:

### **1) To Analyse Wayne Thiebaud's Artistic Techniques**

- Examine the colour palettes, brushstroke techniques, and compositional strategies used in Wayne Thiebaud's food-themed artworks.
- Understand the thematic elements and artistic principles that make Thiebaud's work distinctive.

### **2) To Explore the Fusion of Art and Food in Indore**

- Investigate how the local culinary culture of Indore can be represented through visual arts.
- Identify the similarities and differences between Thiebaud's artistic depiction of food and the potential for depicting Indore's street food.

### **3) To Assess Community Perceptions and Attitudes**

- Conduct a survey to gather data on the perceptions and attitudes of Indore residents and artists towards food-themed art.
- Analyse the survey data to identify trends and significant patterns in community engagement with food-themed art.

### **4) To Foster Artistic Inspiration and Innovation**

- Provide insights and recommendations for local artists on incorporating Thiebaud's techniques into their own work.
- Encourage the creation of new artworks that reflect the vibrant culinary culture of Indore, fostering a dynamic conversation between art and food.



### 5) To Bridge Cultural and Artistic Gaps

- Promote a deeper understanding of the cultural significance of food-themed art in Indore.
- Highlight the potential for art to enhance the appreciation of local culinary traditions and contribute to the cultural identity of the community.

## 3.4. ANALYSIS OF RESEARCHER'S ARTWORKS INSPIRED BY WAYNE THIEBAUD

### 1) Color Palette Analysis:

Wayne Thiebaud's mastery in the use of color, especially his ability to evoke emotions and emphasize specific aspects of food items, served as a compelling inspiration for this researcher's exploration of Indore's street food. Inspired by Thiebaud's strategic use of warm and inviting colors, the researcher applied similar techniques to capture the essence of Indore's culinary delights.

**Figure 1**



**Figure 1** Khaman Jalebi Combo (2023), 6 x 12 inches, Oil on Linen by Pooja Jain

In this artwork, titled '*Khaman Jalebi Combo*', the artist captures the essence of Indore's culinary delight, *Khaman Jalebi Combo*. The color palette employed in the painting draws inspiration from the distinctive style of Wayne Thiebaud. The artist skillfully manipulates the color wheel, emphasizing cool tones in the shadows and enhancing warmth in other areas. The strategic use of color temperature plays a pivotal role in conveying an inviting ambiance to the audience, reminiscent of the experience of enjoying the same freshly prepared dish from a local shop. The artist successfully combines the aesthetics of visual art with the sensory allure of food, creating a harmonious and engaging piece.

### 2) Brushstroke Technique Analysis:

Thiebaud's distinctive brushstroke technique is a hallmark of his artistic style, particularly in the realm of food paintings. He often employs thick and expressive brushstrokes, creating a textured surface that mimics the tactile qualities of the depicted food. In instances where impasto techniques are utilized, the paint is applied in a thick and layered fashion, adding a sculptural quality to the artwork.

**Figure 2****Figure 2** Jalebi (2023), 6 x 12 Inches, Oil on Linen by Pooja Jain

In Jain's exploration inspired by Thiebaud's techniques, the researcher aims to adapt and reinterpret these techniques to convey the richness and joy inherent in Indore's street food '*Jalebi*', employing bold strokes and vivid colors to capture the essence of culinary delights. The researcher's exploration, inspired by Thiebaud's brushstroke technique, aims to vividly capture the sensory richness of Indore's street food. Through bold and expressive brushwork, particularly evident in the depiction of *Jalebis*, the researcher seeks to convey not only the visual appearance but also the palpable and inviting nature of these culinary delights. This approach serves as a powerful tool to translate the vibrancy and tactile qualities of street food into a visual narrative, fostering a deeper connection between the audience and the diverse culinary heritage of Indore. The use of thick impasto techniques in portraying *Jalebis* contributes to a textured and visually dynamic representation, enhancing the overall immersive experience of the artwork. This artistic endeavor not only showcases the researcher's skills but also communicates the cultural richness of Indore's street food, inviting viewers to engage with the visual and sensory essence of this culinary journey.

### 3) Composition Analysis:

Thiebaud's compositional prowess is a key element that contributes to the visual impact and storytelling within his food paintings. Through a meticulous examination of his works, the researcher uncovers insights into how Thiebaud arranges food items within the frame, seeking a deeper understanding of focal points and overall balance.

In the researcher's exploration inspired by Thiebaud's "Salads, Sandwiches, and Desserts," Jain aims to capture the essence of Indore's culinary diversity by adapting similar compositional strategies, infusing her work with a sense of vibrancy and order reflective of the local street food scene. She employs a sense of rhythm and repetition, evident in the rows of savory and sweet items, creating a visually appealing pattern.

In this painting, titled '*Pani Puri*', the artist arranges the iconic Indian street food in a modern way, presenting the *pani puris* in short glasses topped with puris. The transparency of the glasses, the freshness of the flavored water, and the crisp puris



with stuffing are all meticulously depicted. The composition employs rhythm and repetition, with the glasses lined up in a row, creating a visually appealing and balanced pattern. This arrangement not only highlights the textural and visual contrast between the different elements but also enhances the viewer's engagement with the culinary subject. The use of modern presentation techniques reflects a contemporary take on traditional street food, blending the old with the new in a harmonious composition.

**Figure 3**



**Figure 3** Pani Puri (2023), 6 x 12 Inches, Oil on Linen by Pooja Jain

#### 4) Essence of Food Items Analysis:

Thiebaud's remarkable ability to capture the essence of each food item emerges as a defining feature in his paintings. Through a detailed examination of his works, the researcher discerns Thiebaud's nuanced approach to emphasizing specific details, effectively conveying the unique qualities and characteristics of each culinary creation.

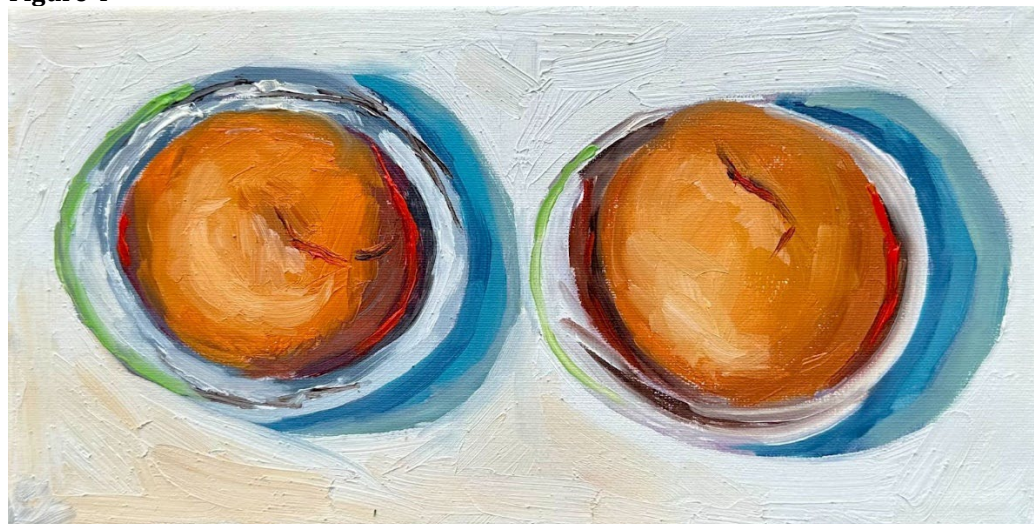
Furthermore, Thiebaud's choice of details often serves to evoke a particular quality or characteristic associated with the food. For example, the researcher observes instances where the artist emphasizes the juiciness of fruits through carefully rendered highlights or the flakiness of pastries through intricate brushwork. These details become pivotal in conveying not just the external features but the inherent nature and essence of the depicted food.

In contemplating the integration of Thiebaud's approach into the researcher's own paintings of Indore's street food, the emphasis lies on a similar attention to detail. By identifying and accentuating the unique qualities of each culinary creation, the researcher seeks to go beyond a visual representation, aiming to evoke a sensory and cultural experience. This approach aligns with the broader goal of fostering a connection between the audience and the diverse and rich street food culture of Indore.

The intricate layers of a pastry or the crumbly texture of *kachori* become more than mere representation; they embody the rich and diverse culinary experiences that define the local gastronomic culture. In researchers' exploration inspired by Thiebaud's approach, Jain aims to capture the essence of these textures, inviting viewers to savor the visual delights reminiscent of Indore's vibrant street food scene.



**Figure 4**



**Figure 4** Kachori (2023), Size: 6 x 12 Inches, Medium: Oil on Linen, by Pooja Jain

### 5) Mood and Atmosphere Analysis:

Thiebaud's adeptness in conveying mood and atmosphere becomes a captivating aspect of his food paintings. Through a meticulous examination of his works, the researcher explores the nuances of how each painting evokes a specific mood and how Thiebaud's artistic choices contribute to the overall emotional impact. The researcher observes a range of emotions, from the joyous and celebratory ambiance in depictions of desserts to the comforting and nostalgic feel of traditional American diner fare.

**Figure 5**



**Figure 5** Pani Puri in Dona (2023), Size: 36 x 36 Inches, Medium: Oil on Linen, by Pooja Jain

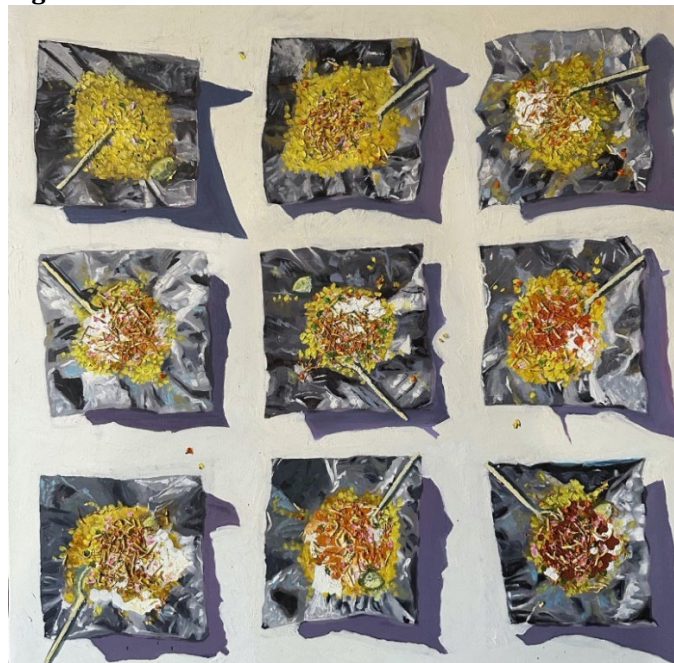
In considering the integration of Thiebaud's approach into the researcher's own paintings of Indore's street food, the researcher acknowledges Thiebaud's ability to create mood and atmosphere as a source of inspiration, guiding the endeavor to not just paint food but to evoke a spectrum of emotions and cultural narratives through the vibrant street food culture of Indore.

In this artwork, titled "*Pani Puri in Dona*," the artist captures the lively and festive mood associated with enjoying *pani puri* from street vendors. The painting uses vibrant and dynamic colors to reflect the excitement and delight of eating this popular snack. The arrangement of the *pani puris* in traditional *donas* (paper bowls) adds an element of authenticity and nostalgia. The composition highlights the crisp puris filled with spicy, tangy water, emphasizing the sensory experience of savoring this beloved street food. The overall mood is one of joy and community, evoking the shared experience of indulging in *pani puri* with friends and family. The artist's careful attention to the textures and colors of the *puris* and the *donas* creates a vivid and immersive depiction, inviting viewers to feel the same sense of excitement and satisfaction.

#### 6) Light and Shadow Analysis:

Thiebaud's adept use of light and shadow emerges as a crucial element in the visual storytelling of his food paintings. Through a close examination of his works, the researcher delves into how Thiebaud strategically employs light and shadow to create depth, texture, and a sense of realism within each painting. One notable aspect is Thiebaud's skillful manipulation of light sources to accentuate certain features of the depicted food items. Whether it's the subtle play of sunlight on a fruit or the dramatic shadows cast by a stack of desserts, Thiebaud's choices in lighting contribute to the overall visual impact. The researcher observes instances where highlights and shadows are carefully orchestrated to enhance the three-dimensionality of the objects, making them appear lifelike and inviting.

**Figure 6**



**Figure 6** Poha (2024), Size: 36 x 36 Inches, Medium: Oil on Linen, by Pooja Jain



In this artwork, titled "*Poha*," the artist has painted nine varieties of *poha*, each representing a different flavor and style enjoyed by the diverse populace. The painting employs a rich texture to capture the actual effect of *sev* and *bundi*, which are common toppings on *poha*. The use of light and shadow in this painting is critical to highlighting the different textures and components of each *poha* variety. The shadows cast by the *sev* and *bundi* add depth, making the toppings appear three-dimensional and realistic. The careful placement of highlights enhances the visual appeal of the *poha*, making it look fresh and appetizing. The overall effect is a vibrant and detailed representation of this beloved street food, inviting viewers to appreciate the diversity and richness of Indore's culinary traditions.

**Figure 7**



**Figure 7** Details of Poha (2024), Medium: Oil on Linen, by Pooja Jain

## 4. SURVEY DATA ANALYSIS

### 4.1. OVERVIEW OF SURVEY RESPONDENTS

In our study titled "Exploring the Fusion of Art and Food in Indore," a total of 30 individuals actively participated in our survey. The responses collected provide valuable insights into the perceptions, preferences, and experiences related to the intersection of art and food in the cultural context of Indore.

**Table 1**

**Table 1** Count of Respondents in Each Age Group

Age Range	Counts
18-24	3
25-34	12
35-44	13
45-54	2

**Table 2**

Table 2 Percentage Distribution of Respondents in Each Age Group	
Age Range	Counts
18-24	10%
25-34	40%
35-44	43%
45-54	7%

**Table 3**

Table 3 Gender Percentage	
Gender	Percentage
Male	53%
Female	47%

## 4.2. KEY FINDING

### 4.2.1. PERCEPTIONS OF THE FUSION OF ART AND FOOD IN INDORE

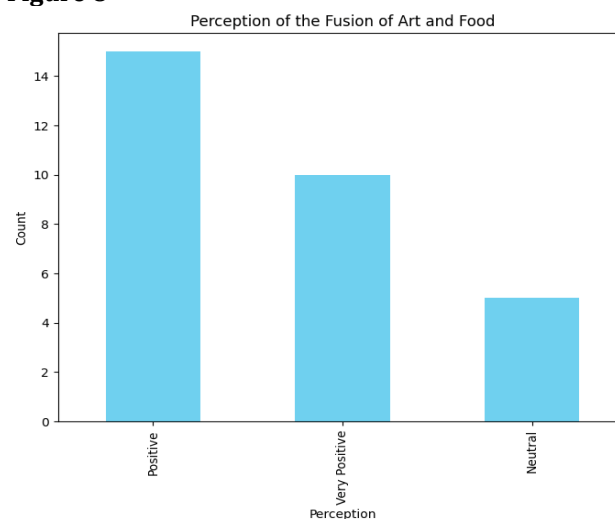
Respondents' Views on: 'How do you perceive(view) the fusion of art and food?'

#### 1) Perceived Fusion:

- **Positive:** 15 respondents
- **Very Positive:** 10 respondents
- **Neutral:** 5 respondents

#### 2) Analysis:

The majority of respondents expressed a positive or very positive outlook on the fusion of art and food in Indore. This suggests a favorable reception of the intersection between culinary experiences and artistic expressions within the community. The positive responses could indicate a potential cultural appreciation for the amalgamation of these two creative domains.

**Figure 8****Figure 8** Perception of the Fusion of Art and Food



### 3) Implications:

The positive perceptions unveiled through the survey responses hint at a promising cultural experience where art and food intertwine. Further exploration into the specific aspects that contribute to this positivity, such as local art initiatives or culinary events, could provide valuable insights into the dynamics of cultural expression in Indore.

#### 4.2.2. KEYWORD EXTRACTION AND WORD VISUALIZATION

To delve deeper into participants' perspectives on the fusion of art and food contributing to the cultural experience in Indore, a qualitative analysis was conducted. The process involved extracting keywords from their responses and creating a word cloud to visually highlight the recurring themes.

### Figure 9



### Figure 9 Word Cloud of Participants Responses

### 1) Key Findings:

- **Cultural Connection:** Keywords such as "culinary elements," "cultural stories," and "traditions" emerged frequently. This suggests a strong association between the fusion of art and food and its role in reinforcing cultural ties.
- **Artistic Inspiration:** Participants expressed excitement about seeing how local cuisine is portrayed in visual arts. Terms like "visual documentation," "portrayed in art," and "presentation of art through food" indicate that art serves as a source of inspiration for culinary creativity.
- **Unique Experience:** The combination of art and food was perceived as providing a unique and enhanced experience. Keywords like "unique experience," "enhances each other," and "immersiveness" underscore the notion that the fusion elevates both the enjoyment of food and the appreciation of art.

## 2) Implications:

**Cultural Enrichment:** The strong association between art, food, and cultural elements implies that initiatives combining these aspects can significantly contribute to the enrichment of Indore's cultural experience.

**Creative Synergy:** The evident excitement about artistic inspiration from culinary elements suggests an opportunity for local artists and chefs to collaborate, fostering a creative synergy that benefits both fields.

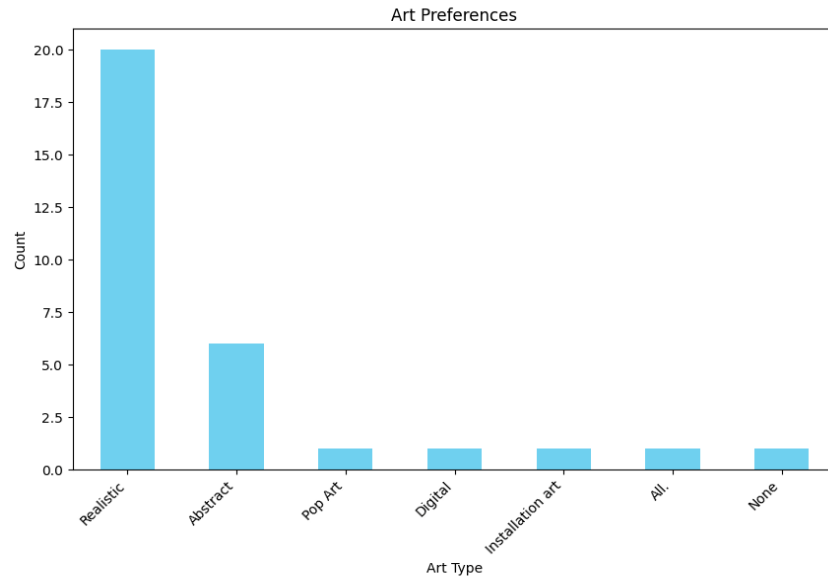
**Enhanced Visitor Experience:** The perception of a unique and immersive experience implies that incorporating art into culinary ventures could enhance the overall experience for residents and attract visitors.

This analysis provides valuable insights into how participants perceive the fusion of art and food, offering actionable implications for cultural initiatives and creative collaborations in Indore.

#### 4.2.3. ANALYSIS OF PARTICIPANT'S ART PREFERENCES

The bar chart illustrates the diverse range of art preferences among the survey participants. Participants were asked to specify the type of art they generally prefer, and the responses reveal a variety of tastes.

**Figure 10**



**Figure 10** Art Preference

Realistic art appears to be a predominant choice, suggesting an appreciation for representations that closely resemble the real world. Additionally, Pop Art and Abstract art hold noticeable positions, indicating an interest in more unconventional and vibrant artistic expressions.

Interestingly, some participants express a preference that depends on certain conditions, such as a blend of Abstract, Realistic, and Pop Art. This nuanced response reflects the dynamic nature of individual preferences and the potential influence of specific contextual factors.

The absence of a clear preference, as indicated by the Noncategorical, suggests a subset of participants who might not have a specific inclination towards a particular art style. Overall, the distribution of art preferences is indicative of the rich tapestry of artistic tastes within the surveyed group, highlighting the subjective and diverse nature of individuals' connections with art.

#### 4.2.4. PARTICIPANT PREFERENCES IN ARTISTIC STYLES OR PERIODS

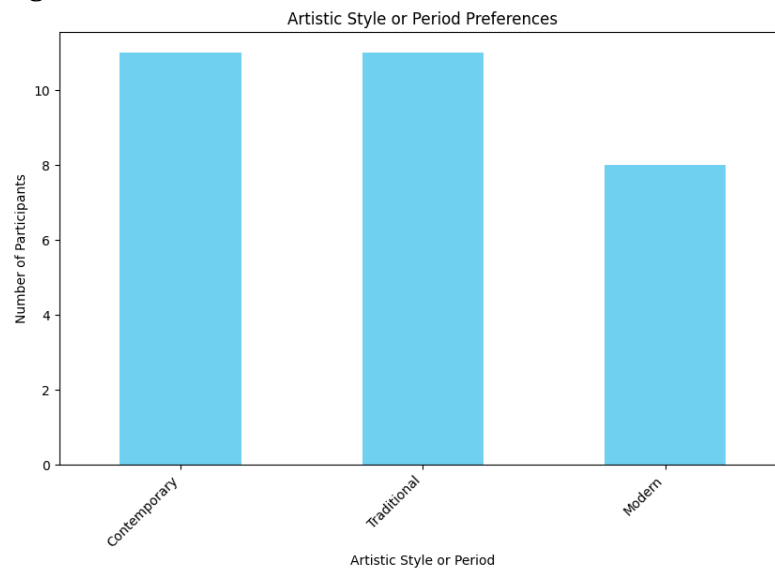
**Question:** Do you have a preference for a specific artistic style or period?

In the survey, participants were queried about their inclinations towards particular artistic styles or periods. The findings reveal a diverse range of preferences, offering valuable insights into the artistic tastes of the respondents.

#### 4.2.5. KEY FINDINGS & VISUAL REPRESENTATION

The bar chart below visually represents the distribution of preferences among participants, offering a clear illustration of the popularity of each artistic style or period.

**Figure 11**



**Figure 11** Artist Style or Period Preference

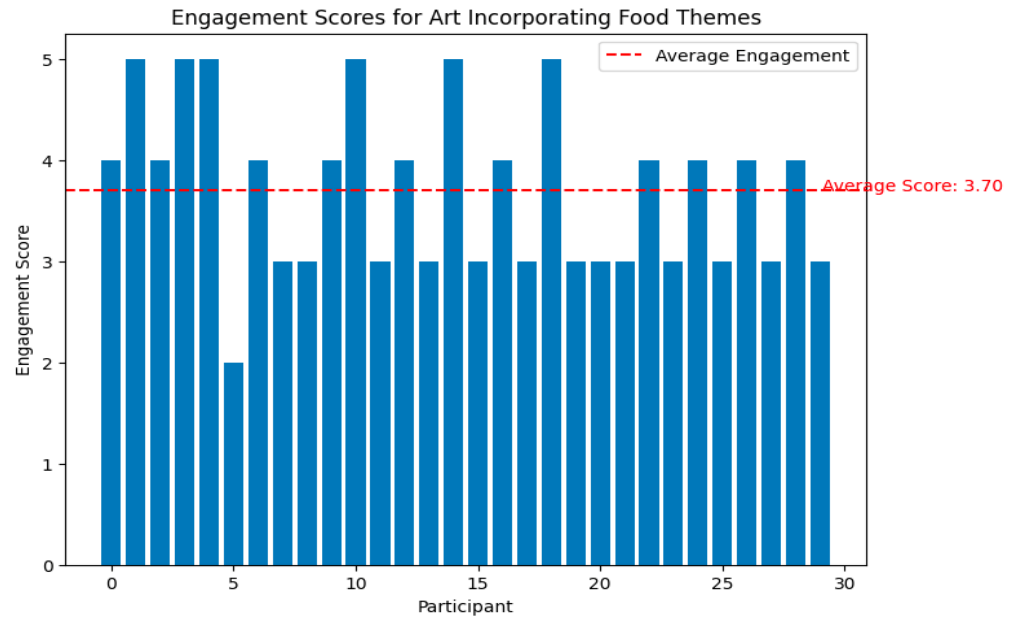
**Contemporary Dominance:** The prevalence of 'Contemporary' as the top choice suggests a contemporary art scene that resonates with the surveyed audience. This insight is valuable for curators, artists, and cultural organizers seeking to align their offerings with popular preferences.

**Acknowledgment of Diversity:** The presence of varied preferences indicates an acknowledgment of diverse artistic expressions. Cultural institutions and events can leverage this diversity to create inclusive and appealing programs.

**Opportunities for Curation:** Understanding participants' preferences opens opportunities for curators and event organizers to tailor exhibitions and cultural events that cater to the diverse tastes of the audience, creating more engaging and relevant experiences.

#### 4.2.6. ART INCORPORATING FOOD THEMES: INSIGHTS FROM BAR PLOT

**Question:** Have you ever encountered or interacted with food-themed art in Indore?

**Figure 12****Figure 12** Engagement Scores for Art Incorporating Food Themes

The bar plot displays participants' responses to the question regarding the engagement level with art that incorporates food themes. The average engagement score, indicated by the red dashed line, is 3.70. The plot reveals a range of participant opinions, with some expressing higher engagement and others lower. This diversity in responses suggests that perceptions of engaging art incorporating food themes vary among participants. Future research could delve deeper into understanding the factors influencing these differing opinions.

#### Implications and Future Considerations:

- **Varied Perspectives:** The variability in responses suggests that participants hold diverse views on the engagement value of art combined with food themes. Understanding these differing perspectives is crucial for tailoring artistic experiences to a broader audience.
- **Factors Influencing Engagement:** Future research endeavors could explore the factors influencing participants' opinions on engaging with food-themed art. These factors may encompass personal experiences, cultural backgrounds, and individual preferences.
- **Informing Art Curation:** Recognizing the range of opinions can inform curators and organizers in creating inclusive and resonant artistic experiences that cater to the diverse engagement preferences within the surveyed audience.

This bar plot not only provides a snapshot of participant sentiments but also lays the groundwork for further investigations into the intricacies of audience engagement with art that seamlessly blends with culinary themes.

#### Interpretation

The analysis indicates that participants frequently associated the fusion of art and food with cultural connections, artistic inspiration, economic impact, and



emotional experiences. The word cloud visualizations provide a snapshot of the prevalent themes in participants' opinions.

### Participant Quotes

Additionally, specific participant quotes exemplify the diverse perspectives:

- "Art relaxes the mind, and Indore food energizes the body, creating a balanced experience."
- "The combination of art and food enhances the cultural experience, making it more immersive and memorable."
- "Indore street food culture is a work of art in itself, contributing significantly to the city's identity."

## 5. DISCUSSION

### 5.1. UNDERSTANDING THE FUSION OF FOOD AND COLORS IN INDORE

#### 5.1.1. INTERPRETATION OF FINDINGS

- **Our research aimed to unravel** the intricate relationship between art, food, and colors in the cultural landscape of Indore. The participants' responses shed light on various aspects, providing valuable insights.
- **Artistic Preferences:** The prevalence of a strong preference for contemporary art (36.7%) among participants suggests a modern inclination within the community. This aligns with the dynamic and evolving nature of Indore's cultural identity.
- **Traditional Ties:** The equally significant affinity for traditional art (36.7%) underscores the city's rooted connection to classical aesthetics. This dual preference reflects the rich cultural tapestry that embraces both the contemporary and the traditional.
- **Engagement with Food-themed Art:** The engagement scores, as indicated by the bar plot, exhibit a spectrum of opinions. While the average score of 3.70 suggests a moderate level of engagement, the diversity in responses emphasizes the subjective nature of interpreting art infused with food themes.

#### 5.1.2. IMPLICATIONS AND CONTRIBUTIONS

- **Cultural Integration:** The coexistence of contemporary and traditional preferences signifies a harmonious blend of the old and the new within Indore's artistic sphere. This cultural integration provides a nuanced canvas for artists and curators to explore and express.
- **Art as a Reflective Medium:** The participants' responses highlight the multifaceted role of art in reflecting personal beliefs, values, and cultural narratives through the fusion of food and colors. The combination serves as a visual documentation of the cultural fabric of Indore.
- **Tailoring Artistic Experiences:** Understanding the diverse engagement levels informs the curation of artistic experiences. Curators can leverage this knowledge to create inclusive exhibitions

that resonate with a broad audience, considering varying preferences in engaging with food-themed art.

### 5.1.3. UNEXPECTED FINDINGS AND CHALLENGES

- **Divergent Engagement:** The varied responses in engagement scores suggest that individuals perceive the fusion of art and food differently. Uncovering the factors influencing these varying opinions could pose a challenge in future research but promises deeper insights into audience preferences.
- **Balancing Traditional and Contemporary:** The coexistence of strong preferences for both traditional and contemporary art presents a challenge in creating exhibitions that appeal to a diverse audience. Striking a balance between these preferences will be crucial for successful cultural integration.
- **In conclusion,** our findings unravel the rich tapestry of Indore's cultural experience, where art, food, and colors converge to create a dynamic and evolving narrative. This exploration serves as a foundational step toward a deeper understanding of the artistic fusion shaping the cultural identity of Indore.

## 6. CONCLUSION

### 6.1. UNVEILING THE CULTURAL CANVAS OF INDORE THROUGH ART, FOOD, AND COLORS

In summary, our research delves into the vibrant cultural experience of Indore, exploring the fusion of art, food, and colors. The participants' responses offer nuanced insights into their artistic preferences, engagement with food-themed art, and the dynamic interplay between traditional and contemporary influences.

#### 6.1.1. KEY POINTS

- **Artistic Preferences:** Our findings highlight a dual inclination within the community, with a notable preference for both contemporary (36.7%) and traditional (36.7%) art. This duality signifies a rich cultural tapestry that embraces diverse aesthetic expressions.
- **Engagement with Food-themed Art:** The engagement scores reveal a spectrum of opinions, emphasizing the subjective nature of interpreting art infused with food themes. The average score of 3.70 indicates a moderate level of engagement, reflecting the diverse perspectives within the community.
- **Cultural Integration:** The coexistence of strong preferences for traditional and contemporary art underscores the cultural integration within Indore. This synthesis provides a unique canvas for artistic expression, allowing for the reflection of personal beliefs, values, and cultural narratives.

#### 6.1.2. SIGNIFICANCE AND CONTRIBUTIONS

- Our research contributes to the understanding of Indore's cultural identity by unraveling the intricate relationship between art, food, and colors. The findings provide valuable insights for artists, curators, and

cultural enthusiasts, guiding the creation of inclusive and resonant artistic experiences.

### 6.1.3. AVENUES FOR FUTURE RESEARCH

- **Influence of Cultural Heritage:** Future research could delve deeper into the influence of Indore's cultural heritage on artistic preferences. Exploring how historical and cultural narratives shape individual perceptions can enhance our understanding of the intricate interplay.
- **Factors Affecting Engagement:** Investigating the factors influencing diverse engagement levels with food-themed art could be a fruitful avenue. Understanding individual preferences and the elements that contribute to a more immersive experience can guide the curation of future exhibitions.
- **Temporal Shifts in Preferences:** Tracking temporal shifts in artistic preferences and engagement levels could provide insights into the evolving cultural landscape. Observing how preferences change over time can inform cultural institutions and artists about emerging trends.
- **In conclusion,** our research opens a window into the captivating world where art, food, and colors converge to shape the cultural identity of Indore. As we continue to unravel the layers of this dynamic fusion, our findings stand as a testament to the richness and diversity inherent in the cultural canvas of this vibrant city.

### CONFLICT OF INTERESTS

None.

### ACKNOWLEDGMENTS

None.

### REFERENCES

- Baker, K., Weber, N. F., Wilkin, K., & Yau, J. (2022). Wayne Thiebaud. Rizzoli.
- Bendiner, K. (2004). Food in Painting: From the Renaissance to the Present. Reaktion Books.
- Benson, A. L. G., & Shearer, D. H. R. (1969). An Interview with Wayne Thiebaud. Leonardo, 2(1), 65-72. <https://doi.org/10.2307/1571930>
- Care, A. U. G. C. (n.d.). An Exploratory Study of Social Media Influence on Gastronomy Tourism-Special Focus on Indore City.
- Dervaux, I., Thiebaud, W., Bailey, C. B., & Library, P. M. (2018). Wayne Thiebaud: Draftsman. The Morgan Library & Museum: Thames & Hudson.
- Garg, R., Pankaj, P., & Kumar, A. (2023). User Experience and Expectations of Streetscape: A Planning Framework for Urban Streets in India. Civil Eng Arch, 11(3), 1480-1486. <https://doi.org/10.13189/cea.2023.110329>
- Kagliwal, B. (2023). A Historian of Technology Watches "The King, His Kitchen, and Other Stories". Technology and Culture, 64(3), 919-929. <https://doi.org/10.1353/tech.2023.a903979>
- Owen, I. H. (2022). More: Cake, Feedism, and Asexuality. Social Text, 40(2), 93-111. <https://doi.org/10.1215/01642472-9631159>

- Pendergrass, L. (2021). Cakes, Cookies, and Gumballs, Oh My! *Mathematics Teacher: Learning and Teaching PK-12*, 114(4), 344. <https://doi.org/10.5951/MTLT.2020.0384>
- Purcell, B. (2022). On 'Wayne Thiebaud 100' and a Conversation with the Artist at Age 101. *Salmagundi*, 214/215, 29-233.
- Sankalia, T. (2023). Tilted Upwards. <https://doi.org/10.5070/S530160720>
- Ubeja, S. K., Hyde, A. M., & Mittal, R. (2021). Factors Influencing Selection of Restaurants: An Empirical Study. In *Interdisciplinary Research in Technology and Management*, 134-140. CRC Press. <https://doi.org/10.1201/9781003202240-22>
- Vance, G. (2021). Wayne Thiebaud Mountains: 1965-2019. Text by Margaretta M. Lovell and Michael M. Thomas. *Mountain Research and Development*, 41(4), M5-M7. <https://doi.org/10.1659/mrd.mm267.1>
- Wansink, B., Mukund, A., & Weislogel, A. (2016). Food Art Does Not Reflect Reality: A Quantitative Content Analysis of Meals in Popular Paintings. *SAGE Open*, 6(3). <https://doi.org/10.1177/2158244016654950>
- Wilkin, K. (2022). Wayne Thiebaud (1920-2021) In Memoriam. *The Hopkins Review*, 15(2), 81-92. <https://doi.org/10.1353/thr.2022.0044>